
Budget Background

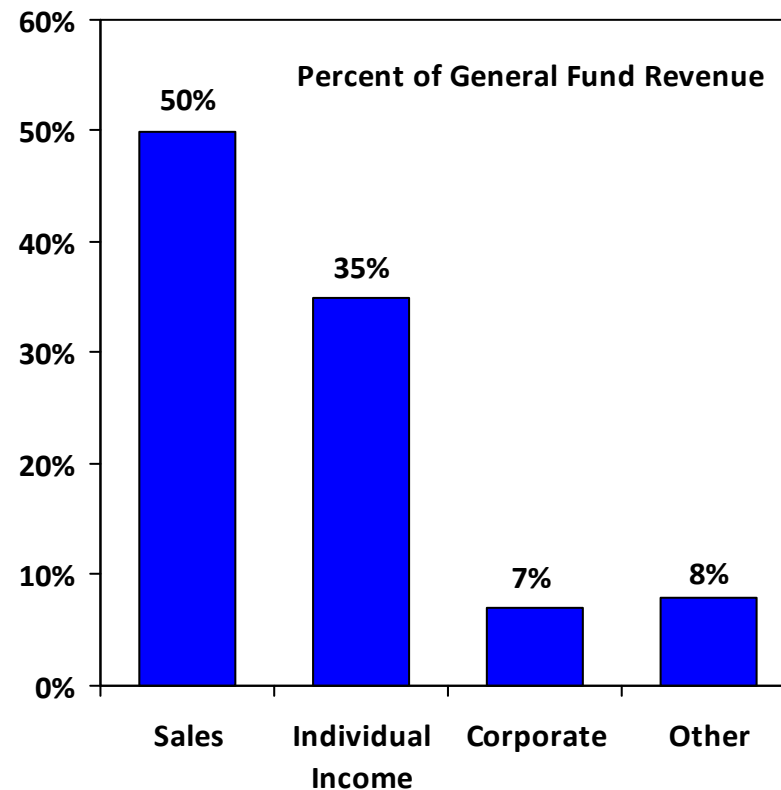
August 29, 2012

JLBC

FY 2013 General Fund Revenue

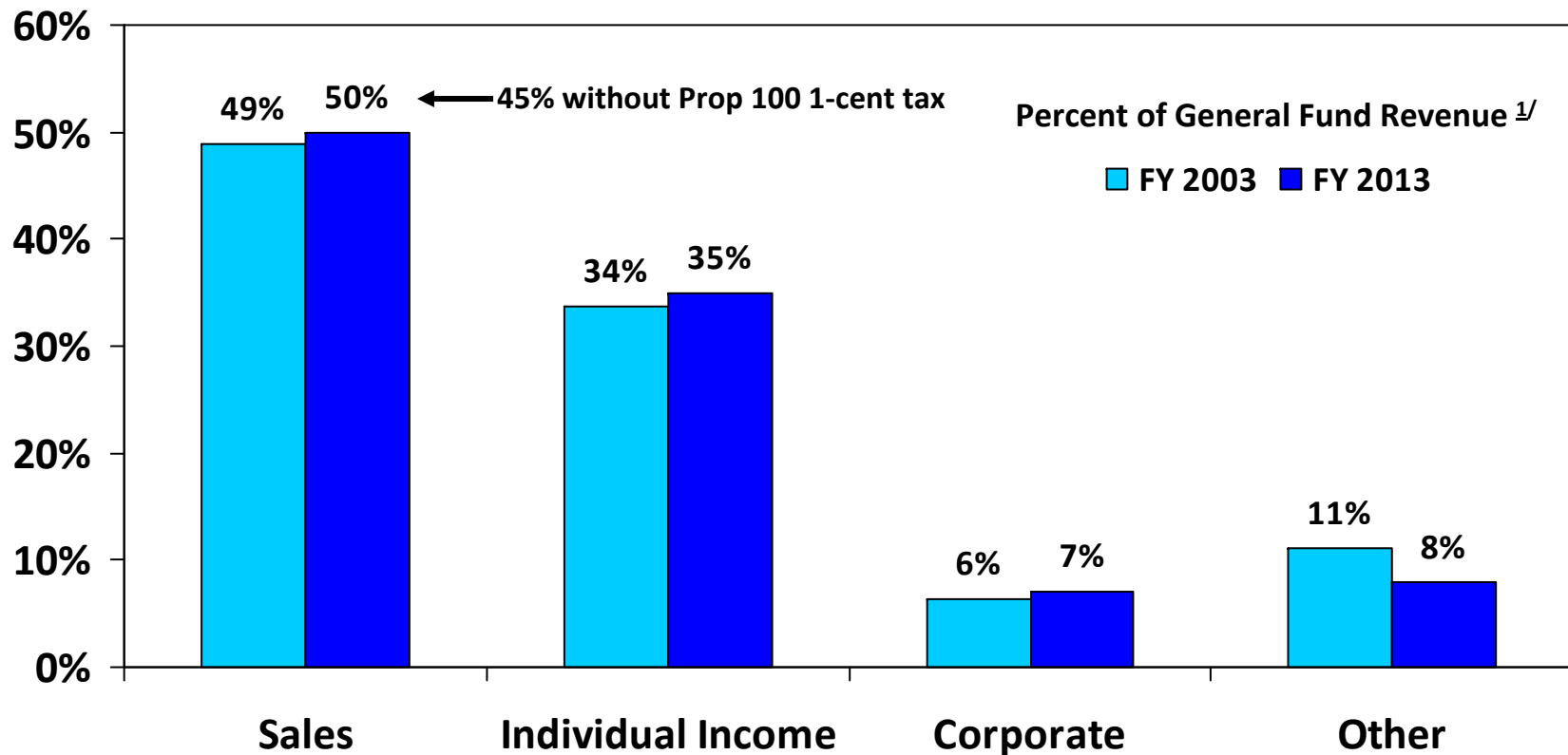
- 92% Generated by 3 Taxes

<u>Source</u>	<u>(Millions)</u>
Sales and Use Tax	\$ 4,697.9
Individual Income Tax	3,233.1
Corporate Income Tax	656.5
Other	<u>771.9</u>
TOTAL REVENUE	\$ 9,359.4 ^{1/}



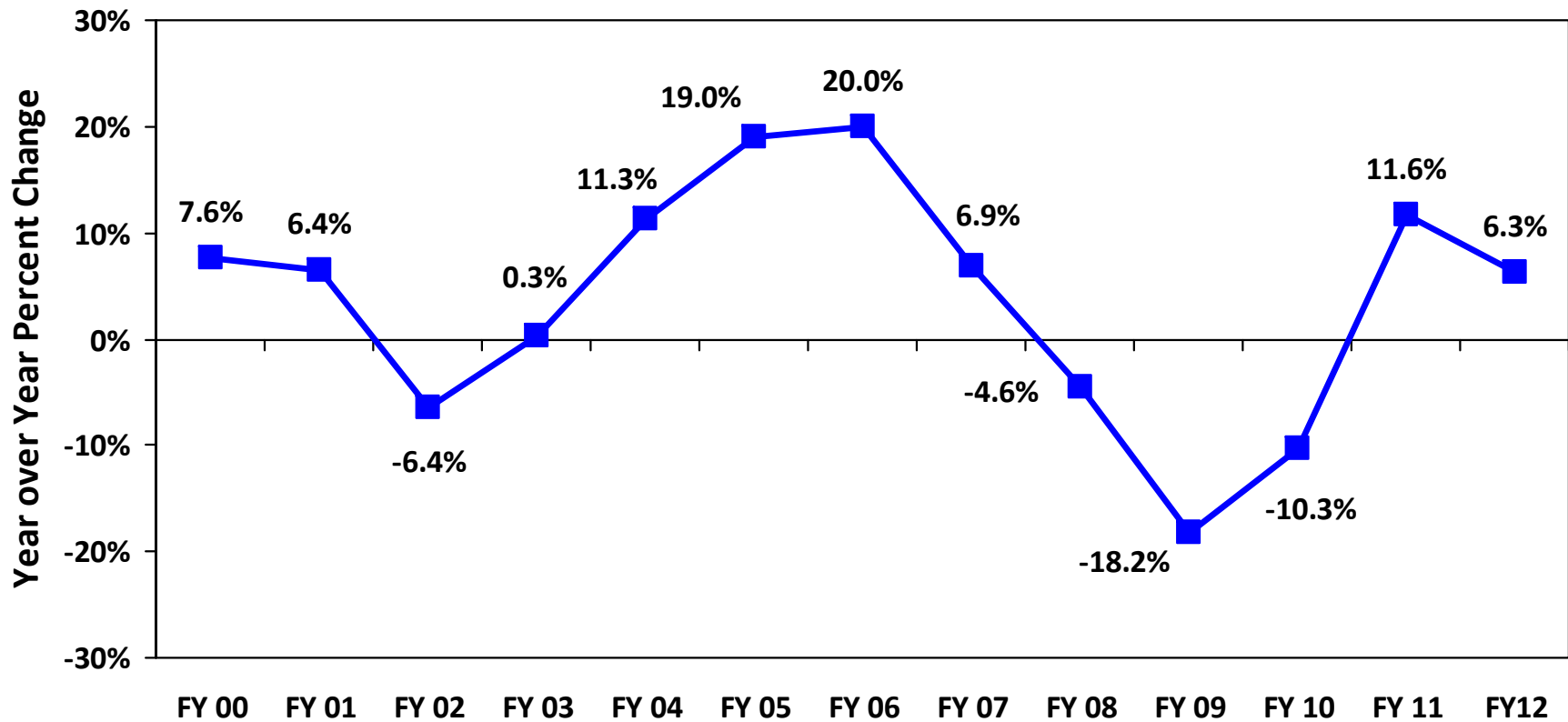
^{1/} Excludes beginning balance, urban revenue sharing, and one-time revenue adjustments, but includes all on-going legislative revenue changes.

FY '13 Revenue Shares Are Comparable To FY '03



^{1/} Excludes beginning balance, urban revenue sharing, and one-time revenue adjustments, but includes all on-going legislative revenue changes.

FY '12 Base General Fund Revenue Increased for the Second Consecutive Year

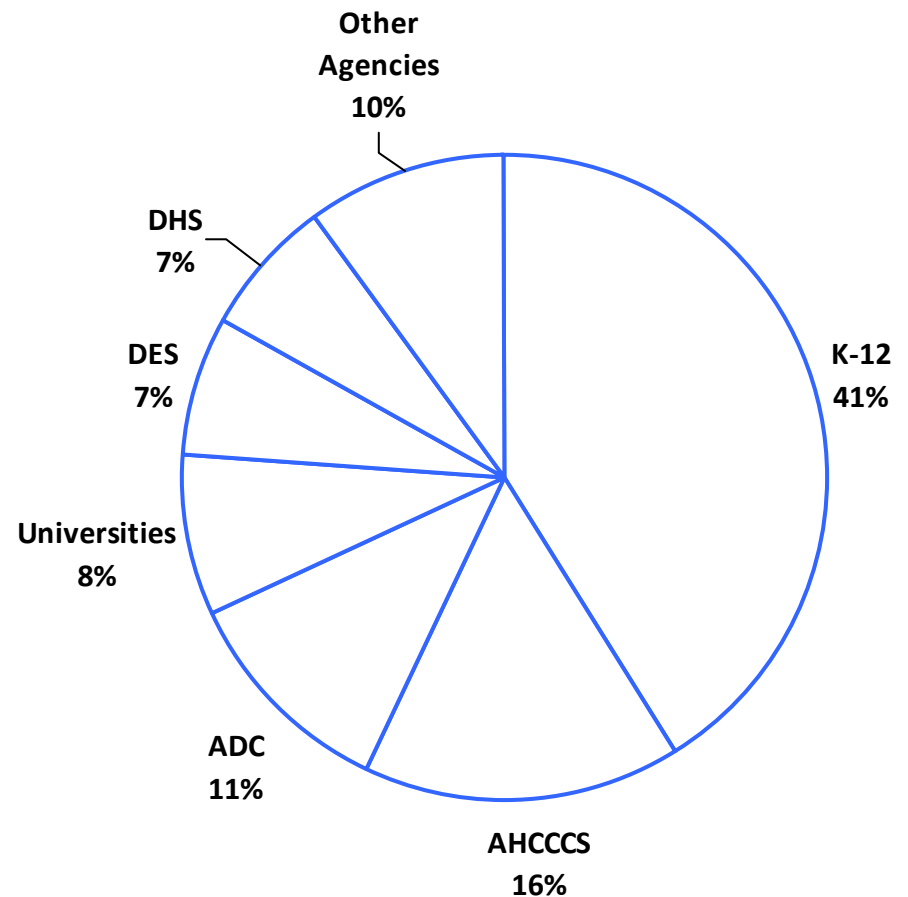


Excludes statutory and one-time changes.

FY 2013 General Fund Appropriations

- 6 Agencies Account for 90% of Spending

<u>Budget Unit</u>	<u>(Millions)</u>
Education (K-12)	\$ 3,496.9
AHCCCS	1,397.6
Corrections	976.4 ^{1/}
Universities	707.3
Economic Security	612.3
Health Services	587.1
Other Agencies	<u>831.3</u>
TOTAL OPERATING BUDGET	\$ 8,608.9 ^{2/}



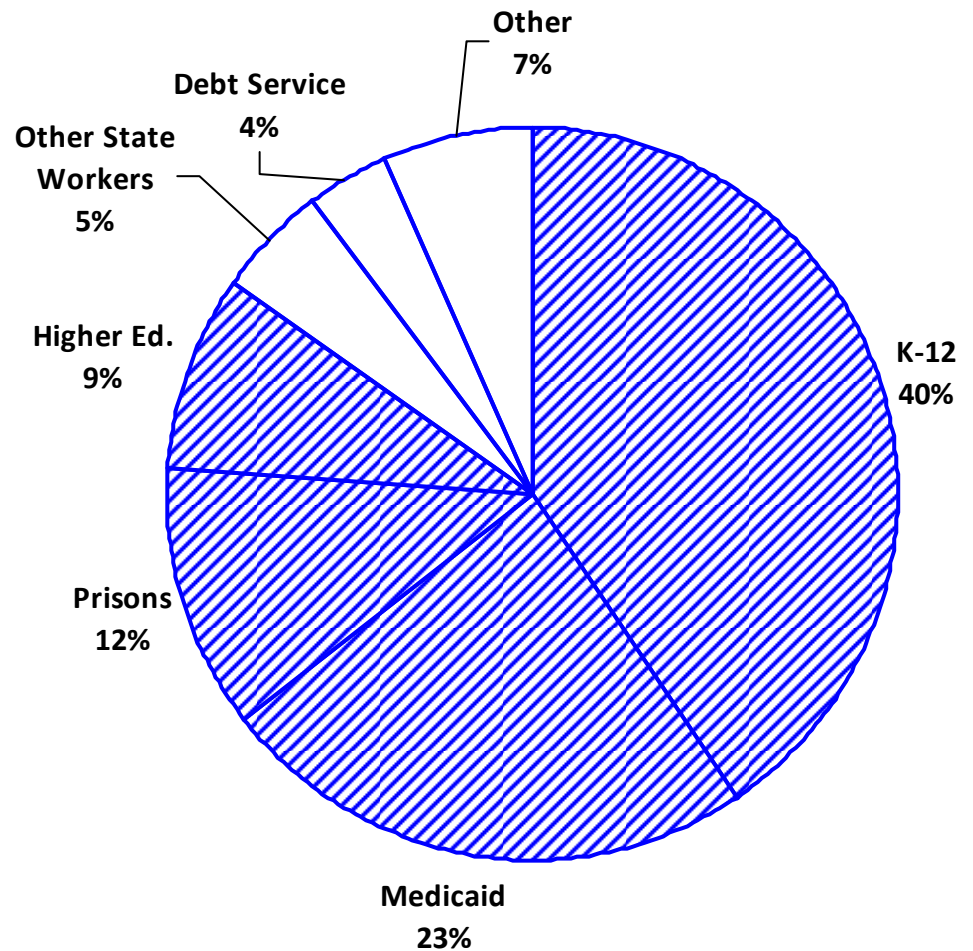
^{1/} Includes \$20 M of capital spending.

^{2/} Excludes administrative adjustments, revertments and a Budget Stabilization Fund deposit.

The 3 Main Drivers of General Fund Spending Are Education, Health, and Prisons

- Represents 84% of On-Going General Fund Budget

	(FY '13 \$ in Millions)
Education (K-12)	\$ 3,496.9
Medicaid	2,054.1
Prisons	999.9 ^{1/}
Higher Education	739.1
Other State Workers	420.2
Debt Service	321.1
Other	<u>577.6</u>
TOTAL	\$ 8,608.9

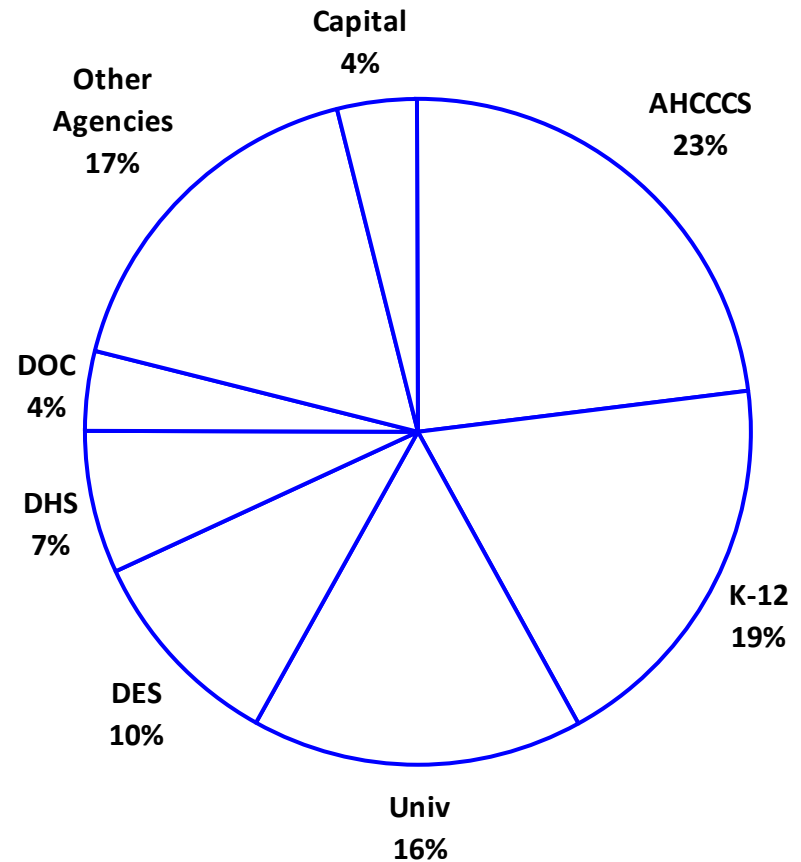


^{1/} Includes \$20 M of capital spending.

FY 2013 Total Spending is \$28 Billion

- General and Non-General Fund

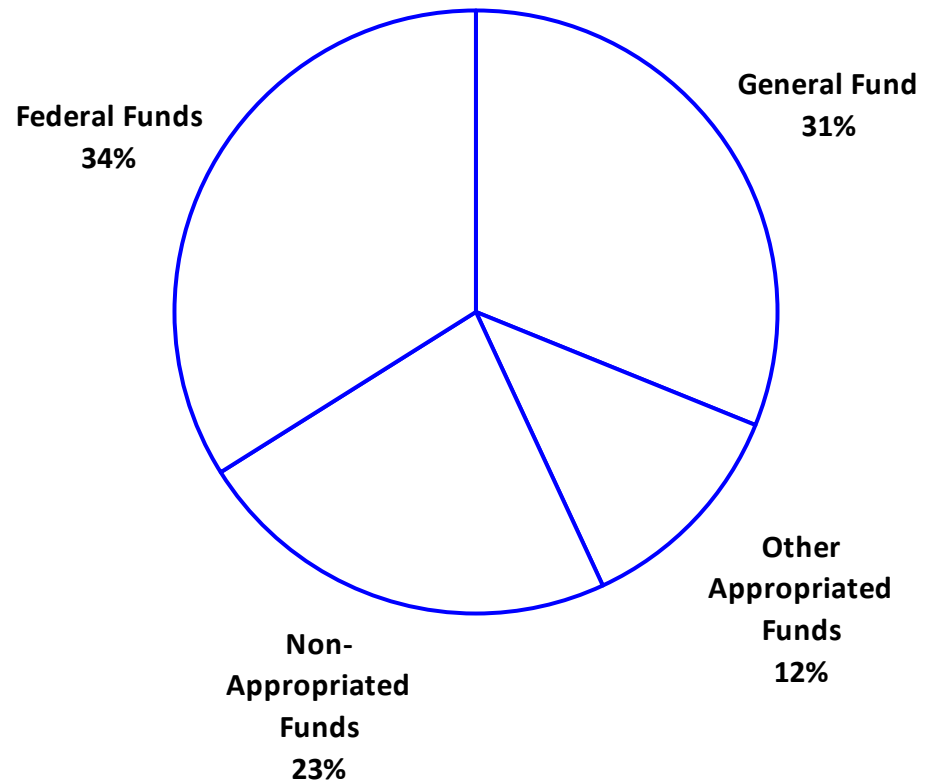
<u>Budget Unit</u>	<u>(Millions)</u>
AHCCCS	\$ 6,379.9
Education (K-12)	5,209.7
Universities	4,346.1
Economic Security	2,732.6
Health Services	1,927.5
Corrections	1,059.3
Other Agencies	4,903.4
Capital	<u>1,294.3</u>
TOTAL	\$ 27,852.8



The \$8.6 B General Fund Share is 31% of Total Funds

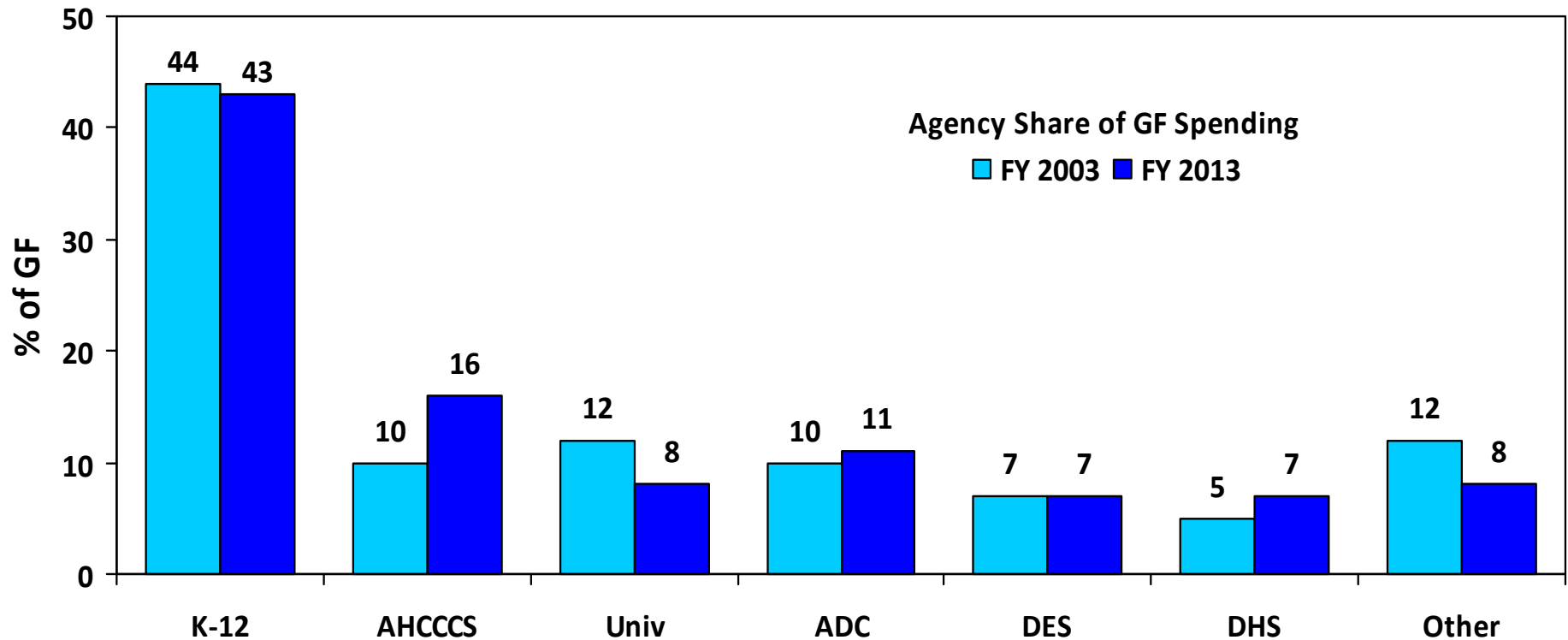
- GF Share Down from 43% in FY '02

<u>Fund Source</u>	<u>(Millions)</u>
General Fund	\$ 8,608.9
Other Appropriated Funds	3,330.1
Non-Appropriated Funds	6,440.6
Federal Funds	<u>9,473.2</u>
TOTAL	\$ 27,852.8



FY 03 vs. FY 13 General Fund Spending

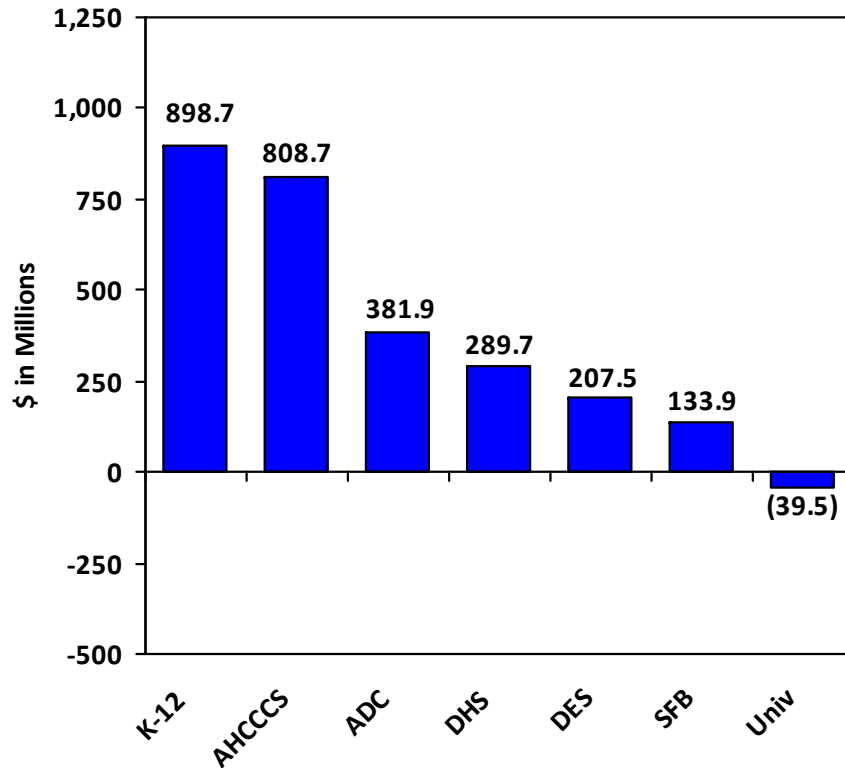
- AHCCCS' Share Grows, While Universities' Declines



FY 2003 vs. FY 2013 General Fund Spending

- K-12 Added Most Dollars While AHCCCS Had Highest Percent Growth

Dollar Change from FY 2003 to FY 2013 by Agency



Percent Change from FY 2003 to FY 2013 by Agency

