
Arizona Economic Trends

December 2016

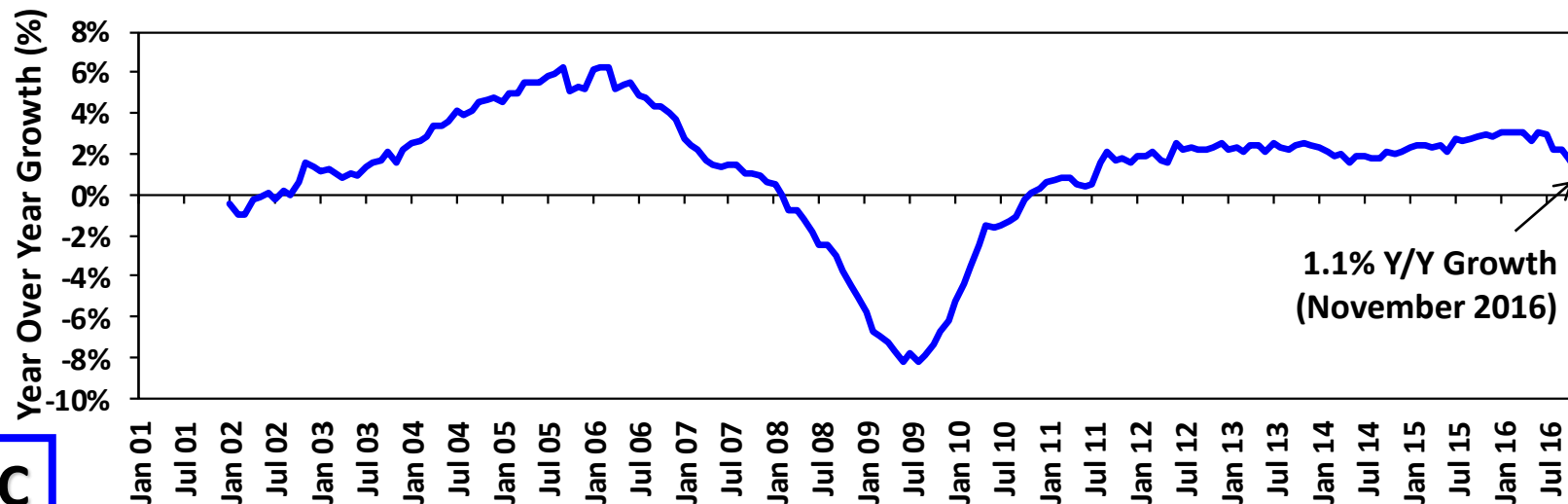
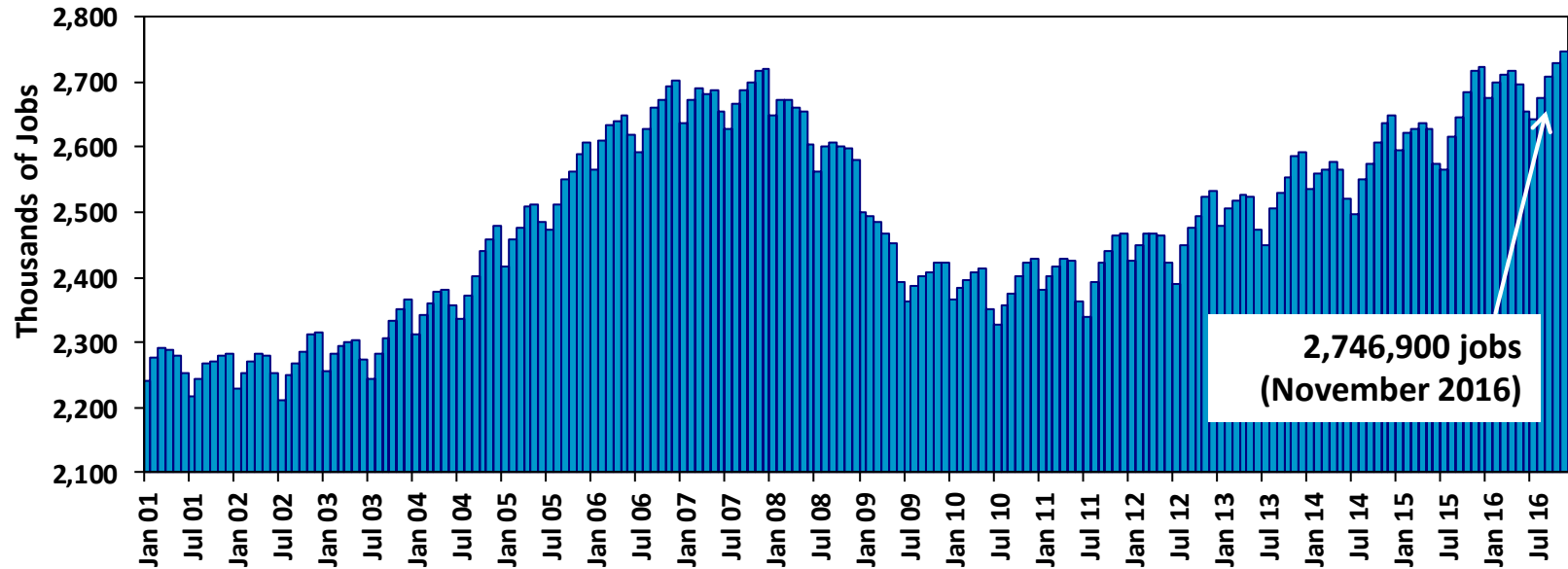
JLBC

Contents

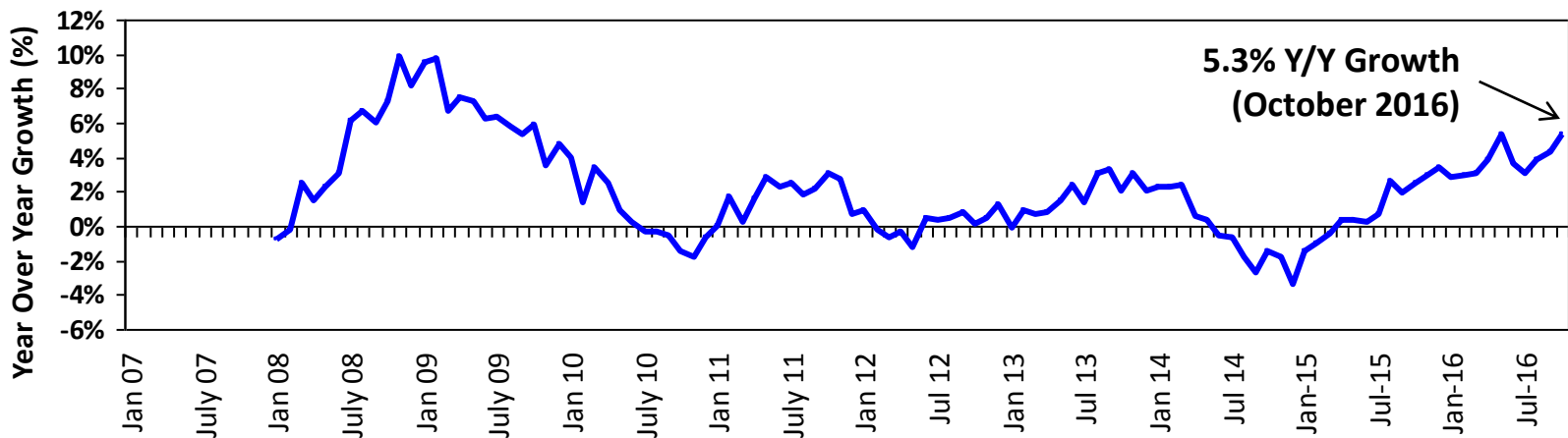
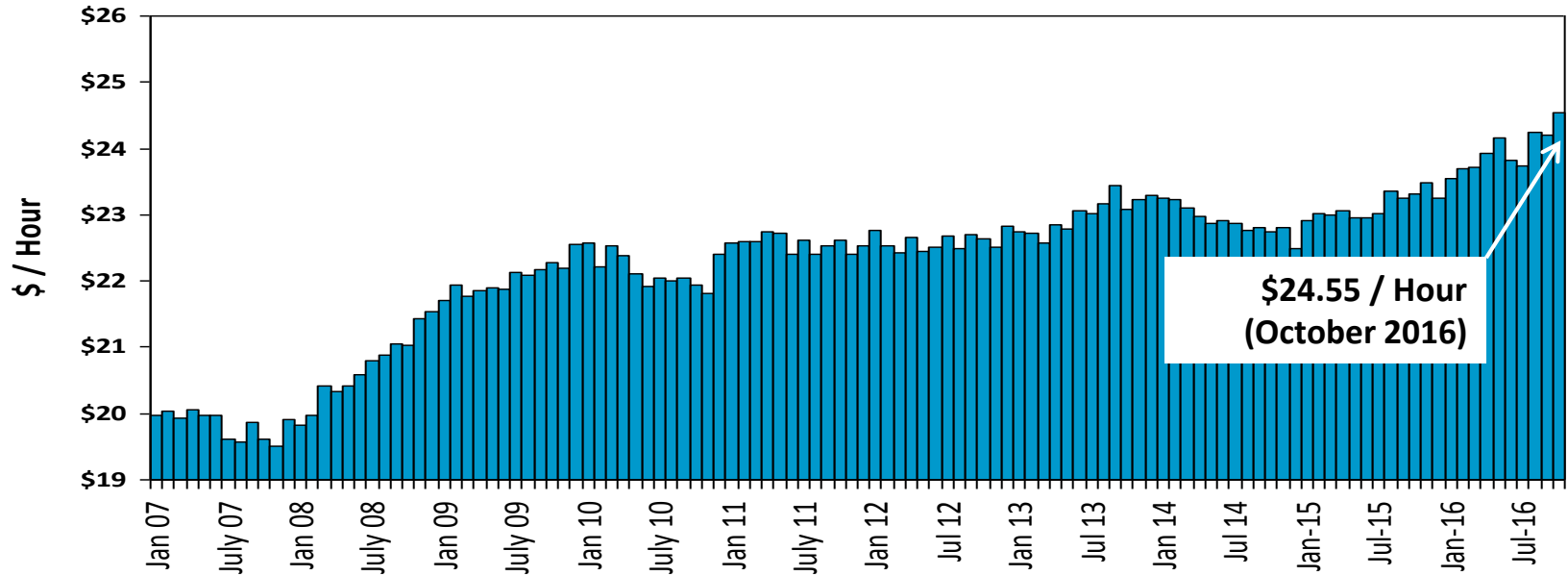
Page:

- 3.....Total Non-Farm Employment
- 4.....Average Hourly Earnings – Private Sector
- 5.....Initial Claims for Unemployment Insurance
- 6.....State Sales Tax Collections – Retail Category
- 7.....State Sales Tax Collections – Contracting
Category
- 8.....Residential Building Permits
- 9.....Economic Activity Index

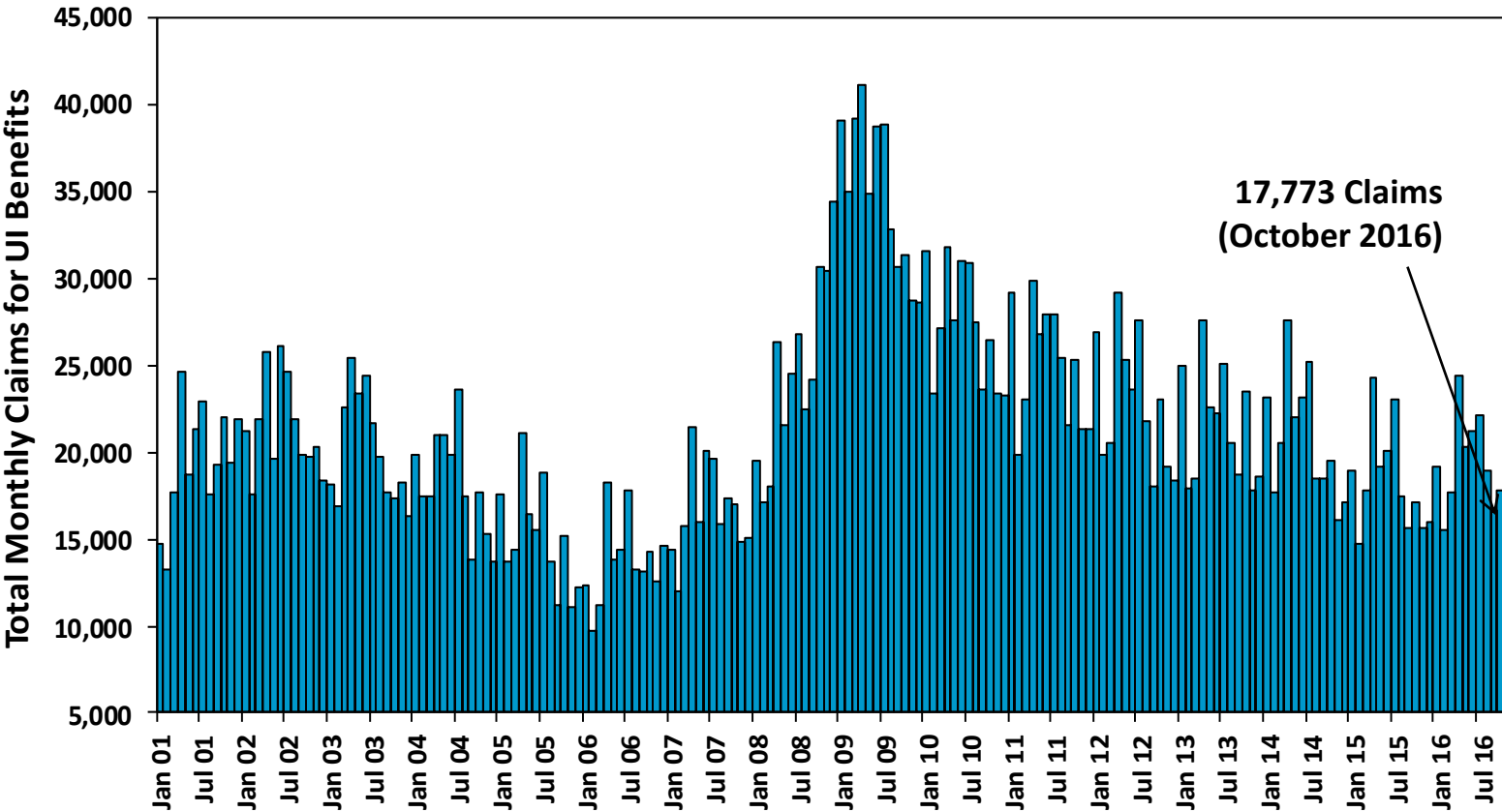
Total Non-Farm Employment



Average Hourly Earnings – Private Sector



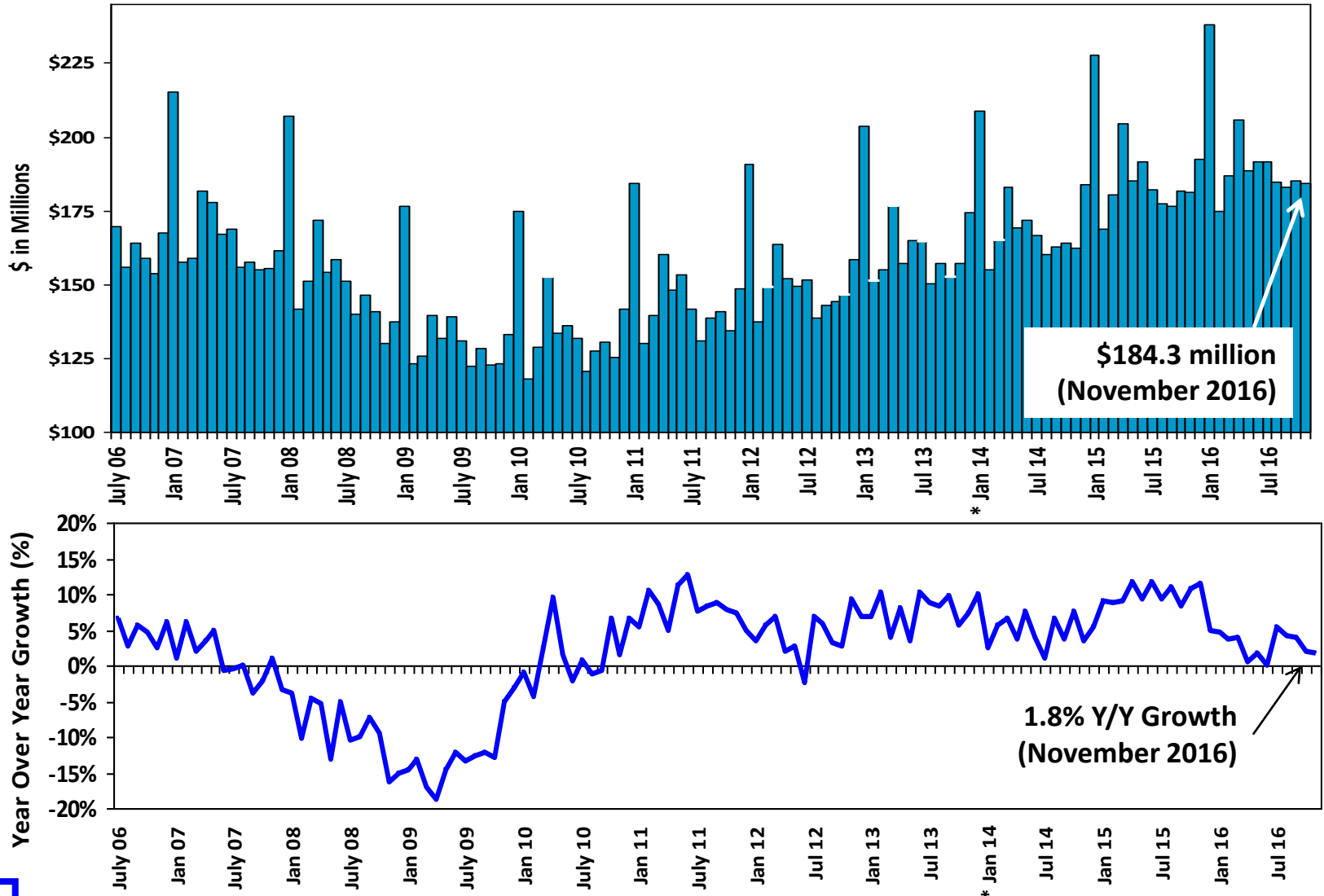
Initial Claims for Unemployment Insurance



17,773 Claims
(October 2016)

Not seasonally adjusted

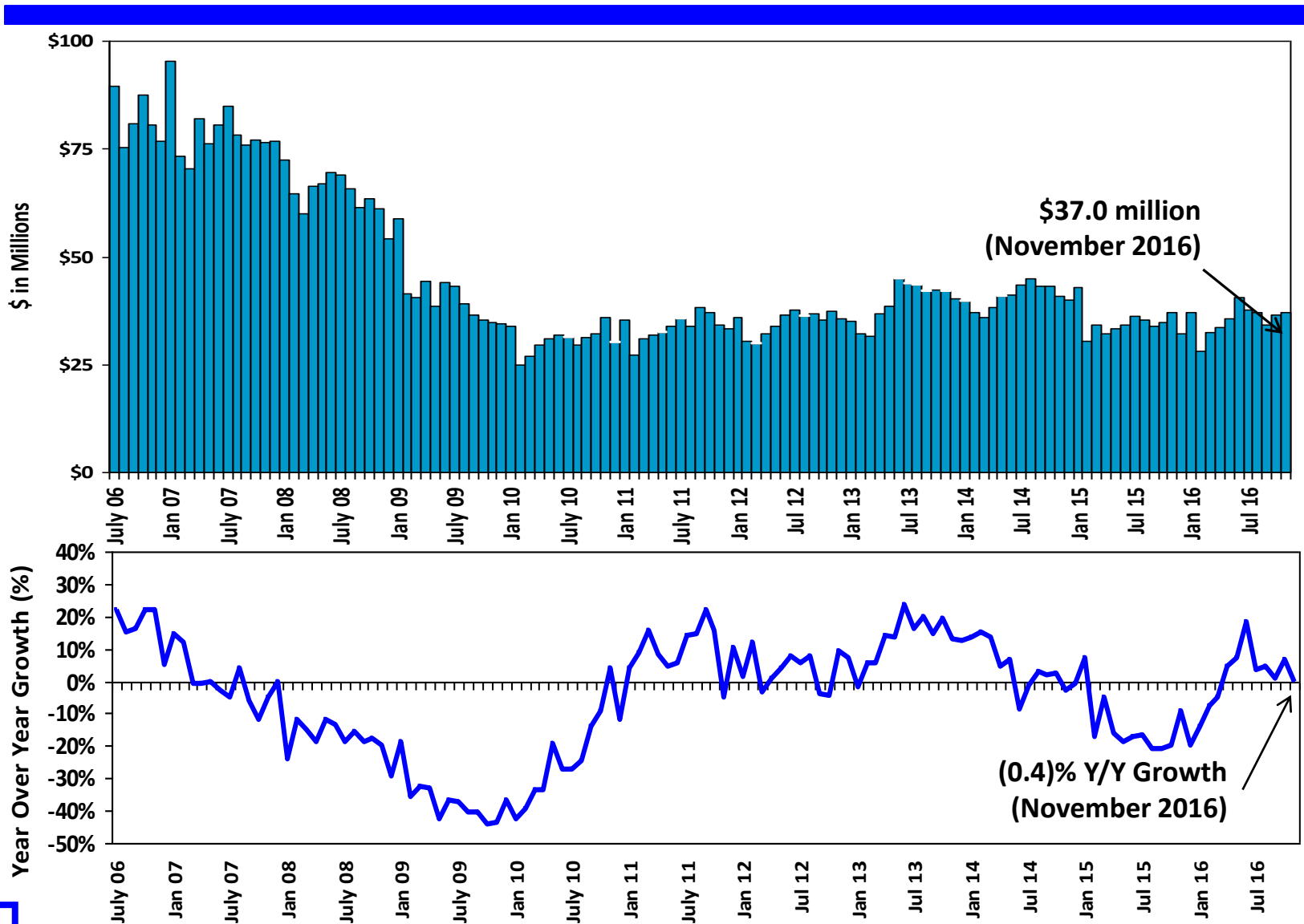
State Sales Tax Collections – Retail Category



Excludes temporary 1 ¢ sales tax

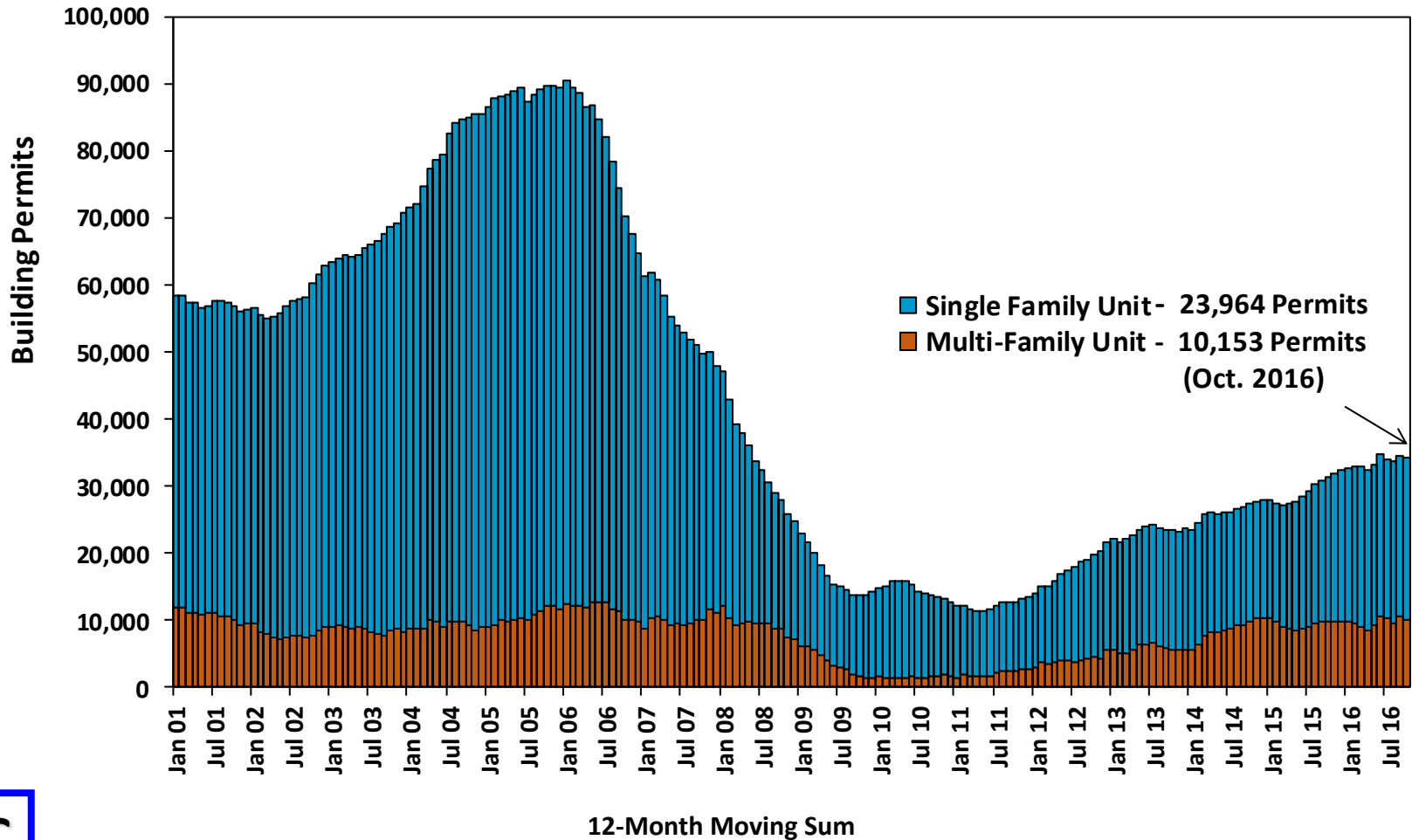
* January 2014 estimate adjusted downward by \$30 million to reflect one-time category shift.

State Sales Tax Collections – Contracting Category

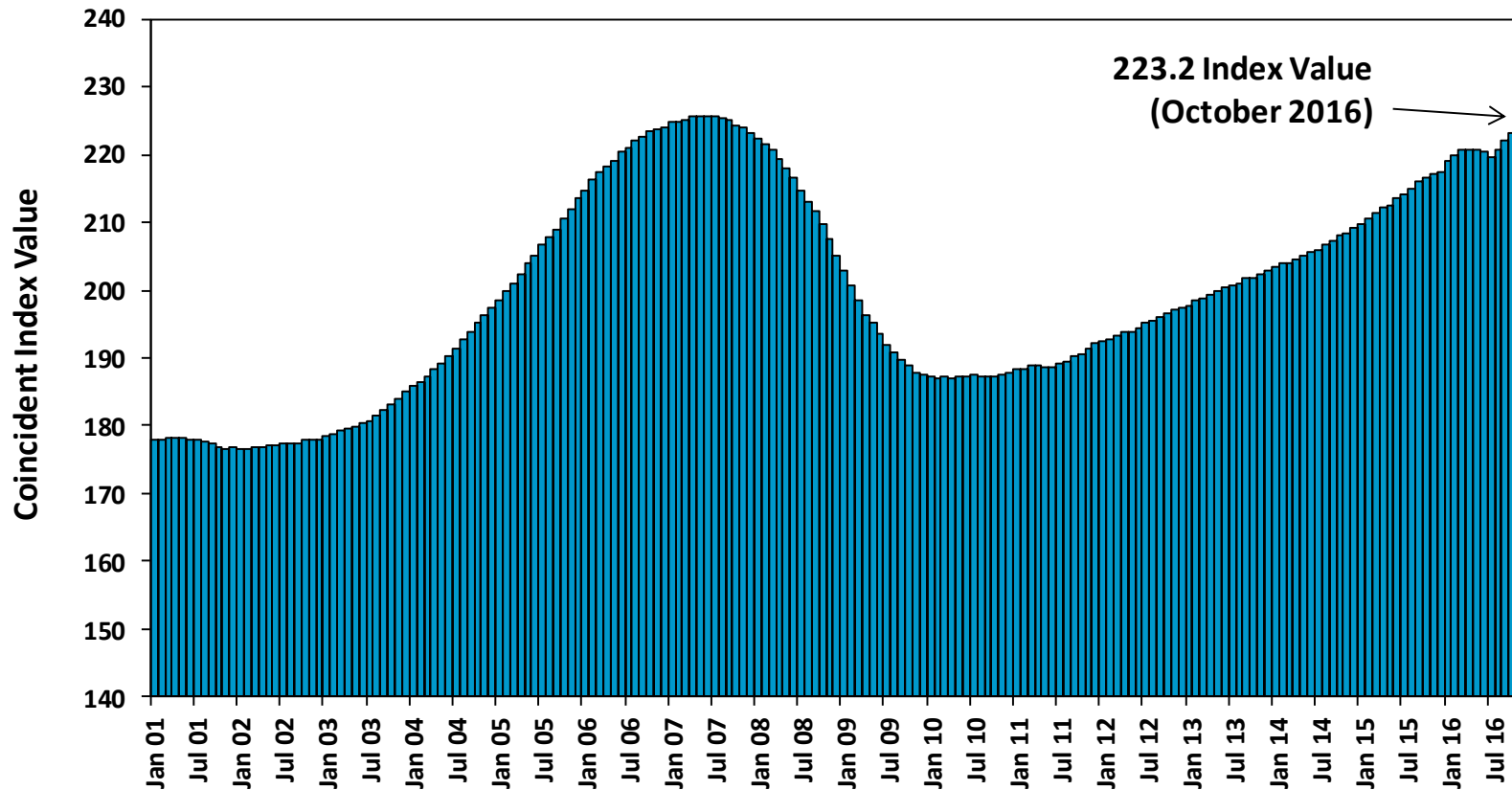


Excludes temporary 1 ¢ sales tax

Residential Building Permits



Economic Activity Index



Source: Coincident Index – Federal Reserve Bank of Philadelphia. Combines four state-level indicators (employment, average hours worked in manufacturing, the unemployment rate, and wage and salary disbursements) to summarize current economic conditions.