
State Board of Education

January 18, 2017

Education Subcommittee

JLBC

Board Composition: 11 Members + Staff

- Board: State Superintendent + 10 Members Appointed by Governor

Superintendent of Public Instruction

High School Superintendent

University President

Teacher

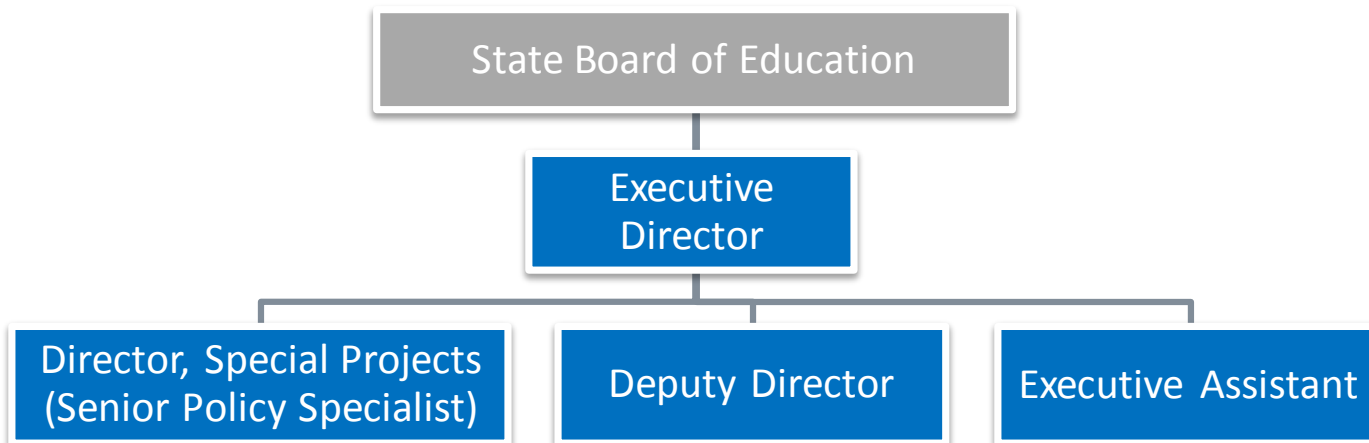
Community College District Chancellor

County Superintendent

Charter School Administrator

4 Lay Members

- Board Funding: \$1.1 M from the General Fund and 4 FTEs



Powers and Duties: SBE and ADE

- Laws 2016 Clarified Roles and Responsibilities

State Board of Education

Determine state education policies; delegate their execution to the Superintendent

Set K-12 academic standards, including requirements to graduate 3rd, 8th, & 12th grade

Adopt menu of proficiency examinations

Determine teacher certification standards and alternate credential pathways

Coordinate with Attorney General to act on findings of teacher misconduct

Department of Education

Execute policies of the Board, under direction of the Superintendent

Distribute state & federal pass-through funds to school districts and charter schools

Administer education programs, e.g., K-3 Reading, Empowerment Scholarship Accounts

Develop and maintain student data system and school report cards

Investigate teacher misconduct claims

'18 Executive Budget Request

Executive proposes \$98,800 General Fund increase in '18 SBE funding:

- ❑ \$50,000: One-Time Legal Costs

- ❑ \$48,800: Intergovernmental Service Agreement (ISA) with Attorney General's Office for Legal Services
 - Restores funds that were shifted from SBE to ADE as part of transfer of Teacher Investigation Unit (Laws 2016, Chapter 138)
 - Executive proposes corresponding reduction to ADE

State Board of Education

- Website Links

- JLBC Baseline -
[State Board of Education](#)
- Executive Budget -
[State Board of Education](#)