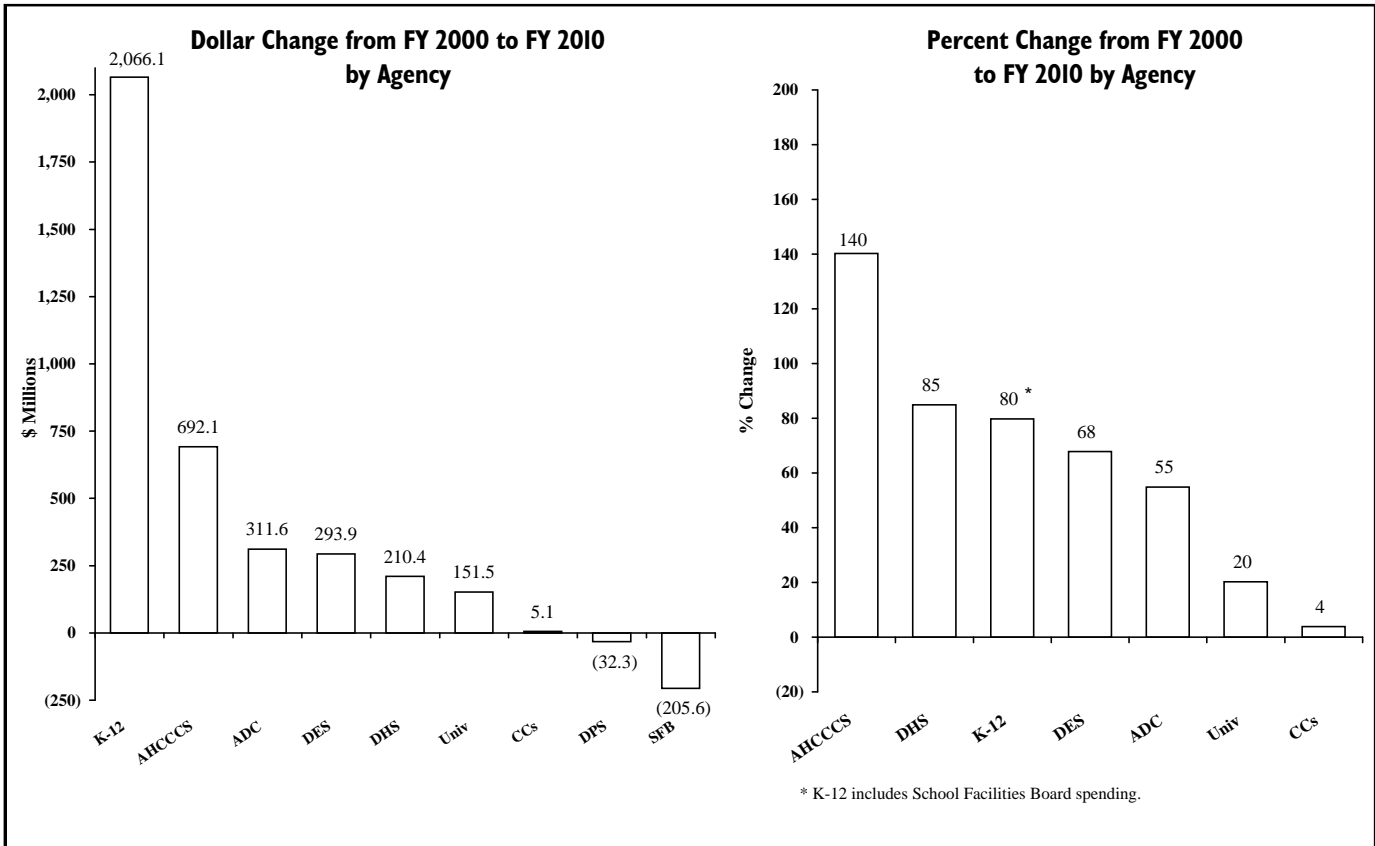
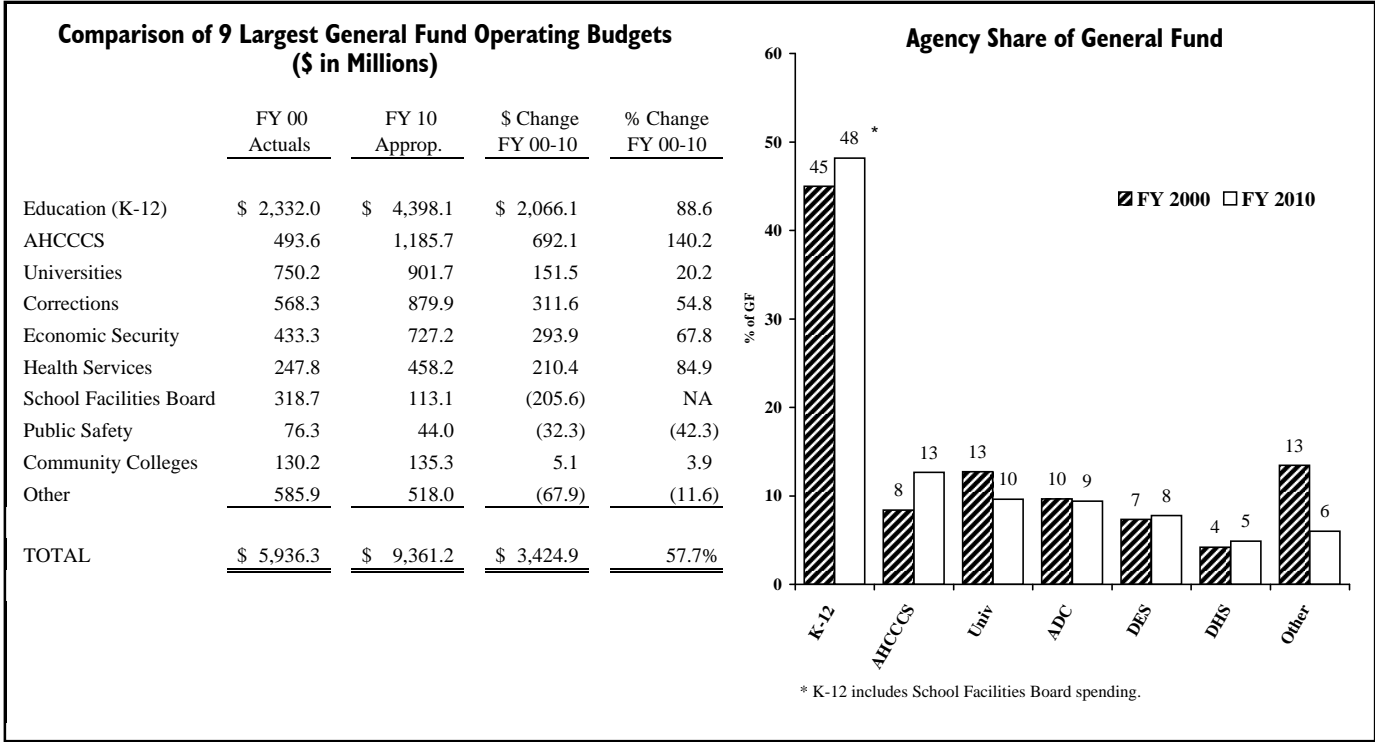


"THEN AND NOW" - FY 2000 vs. FY 2010 General Fund Spending



"THEN AND NOW" - FY 2000 vs. FY 2010 General Fund Revenue and Ending Balances

General Fund Revenue, Expenditures and Ending Balances (\$ in Millions)

Fiscal Year	Revenue	Expenditures	Ending Balance	Ending Balance as a % of Revenue
2000	6,215.7	6,012.3	203.4	3.3%
2001	6,381.0	6,367.7	13.3	0.2%
2002	6,339.6	6,338.6	1.0	0.0%
2003	6,232.8	6,040.6	192.2	3.1%
2004	6,876.2	6,515.8	360.4	5.2%
2005	8,184.1	7,545.1	639.0	7.8%
2006	9,814.9	8,768.4	1,046.5	10.7%
2007	10,672.2	10,200.5	471.7	4.4%
2008	10,038.2	10,037.2	1.0	0.0%
2009	8,442.5	8,409.7	32.8 *	0.4%
2010	8,221.0	8,671.6	(450.6) *	-5.5%

*FY 2009 shortfall projected to be \$(467) M, which would increase FY 2010 shortfall to \$(951) M.

General Fund Major Tax Sources as a Percent of Total Revenue ^{1/}

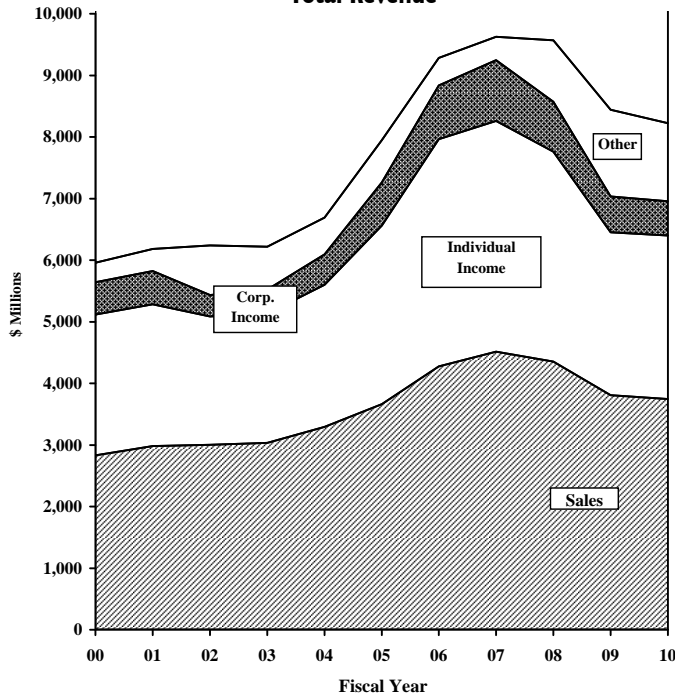
Fiscal Year	Sales	Individual Income	Corporate Income	Other
2000	47.5%	38.4%	8.8%	5.3%
2001	48.3%	37.2%	8.8%	5.8%
2002	48.1%	33.4%	5.5%	12.9%
2003	48.8%	33.7%	6.3%	11.2%
2004	49.2%	34.5%	7.4%	8.9%
2005	46.1%	36.4%	8.8%	8.7%
2006	46.0%	39.7%	9.4%	4.8%
2007	46.9%	38.9%	10.2%	3.9%
2008	45.5%	35.6%	8.5%	10.4%
2009	45.1%	31.3%	6.9%	16.7%
2010	45.5%	32.3%	6.8%	15.4% ^{2/}

^{1/} Excludes balance forward from prior year.

^{2/} Includes \$1.104 billion in FY 2010 one-time revenue adjustments.

See prior Appropriations Reports for earlier years.

General Fund Major Tax Sources as a Share of Total Revenue



FY 2000 vs. FY 2010 Major Tax Sources as a Percent of Total Revenue

